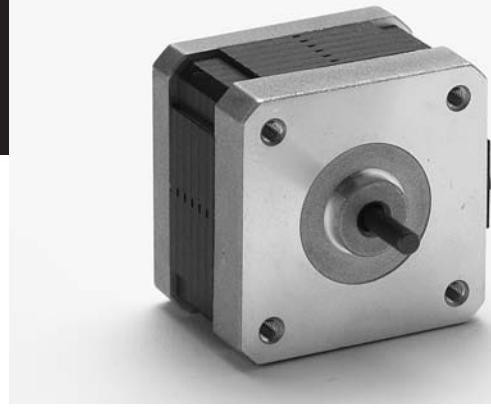


2 Phase Hybrid Stepping Motor

35D SERIES

□ 35mm



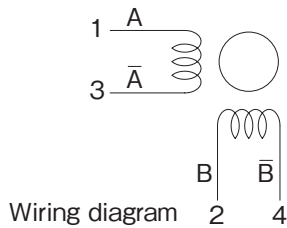
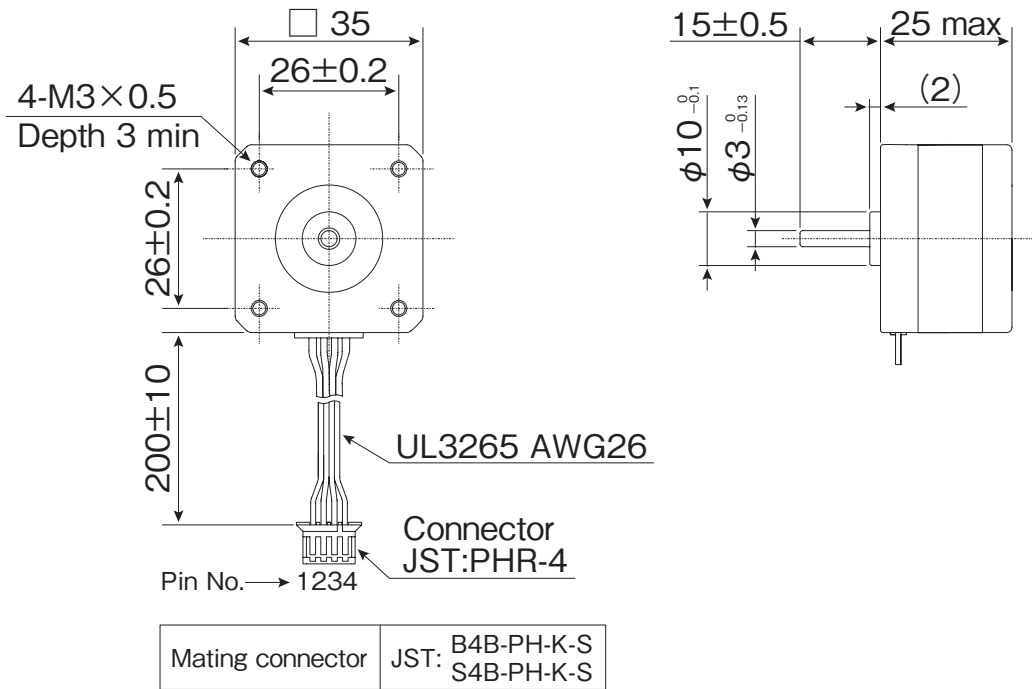
1.8°

Bipolar

SPECIFICATIONS

| MODEL | STEP ANGLE | VOLTAGE | CURRENT | RESISTANCE | INDUCTANCE | HOLDING TORQUE | ROTOR INERTIA | NUMBER OF LEADS | MASS | LENGTH |
|------------|------------|---------|---------|------------|------------|----------------|---------------|-----------------|------|--------|
| | Deg. | | | | | | | | | |
| SST35D1045 | 1.8 | 7.5 | 0.4 | 18.8 | 15.0 | 75.5 | 6.4 | 4 | 110 | 25max |
| SST35D1065 | 1.8 | 5.5 | 0.6 | 9.1 | 7.3 | 78.5 | 6.4 | 4 | 110 | 25max |
| SST35D1085 | 1.8 | 4.2 | 0.8 | 5.2 | 4.1 | 80.4 | 6.4 | 4 | 110 | 25max |
| SST35D1105 | 1.8 | 3.6 | 1.0 | 3.6 | 3.0 | 82.4 | 6.4 | 4 | 110 | 25max |
| SST35D1125 | 1.8 | 2.6 | 1.2 | 2.2 | 1.8 | 76.5 | 6.4 | 4 | 110 | 25max |

DIMENSIONS [EXAMPLE]

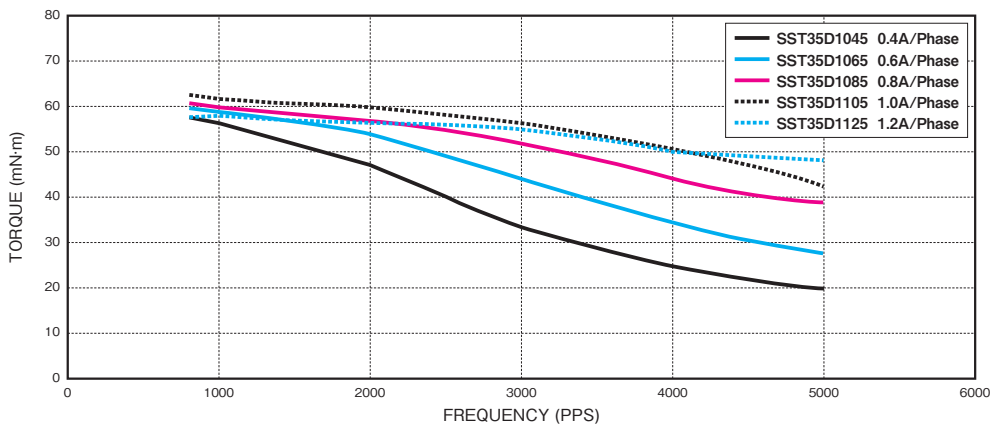


TORQUE RANGE

| STEP ANGLE | SIZE | WINDINGS | MODEL | TORQUE (mN·m) *FREQUENCY at 1,000pps | | | | | | | | | | | | | | | | |
|------------|-------|----------|---------|--------------------------------------|---|-----|-----|-----|-----|-----|-----|------|------|------|--|--|--|--|--|--|
| | | | | 0 | 50 | 100 | 200 | 300 | 400 | 600 | 800 | 1000 | 1500 | 2000 | | | | | | |
| 1.8° | □35mm | NEMA14 | Bipolar | 35D1 | [Torque values for various frequencies] | | | | | | | | | | | | | | | |

PULL OUT TORQUE CURVE

SST35D1XXX



DRIVER : Chopper
 SUPPLY VOLTAGE : DC24V
 EXCITING MODE = 2 Phase
 MOUNTING : With rubber damper

i Available shaft, lead wires, winding, encoder and other customization. Feel free to contact sales office or sales agent.

! Operate the motor keeping the motor surface temperature at 100 deg. C or lower.

Stepping Motor

BLDC Motor

Motor Driver

Other Motor