

Servo Motor & Driver



■ Servo Motor: LA052 (Encoder model)

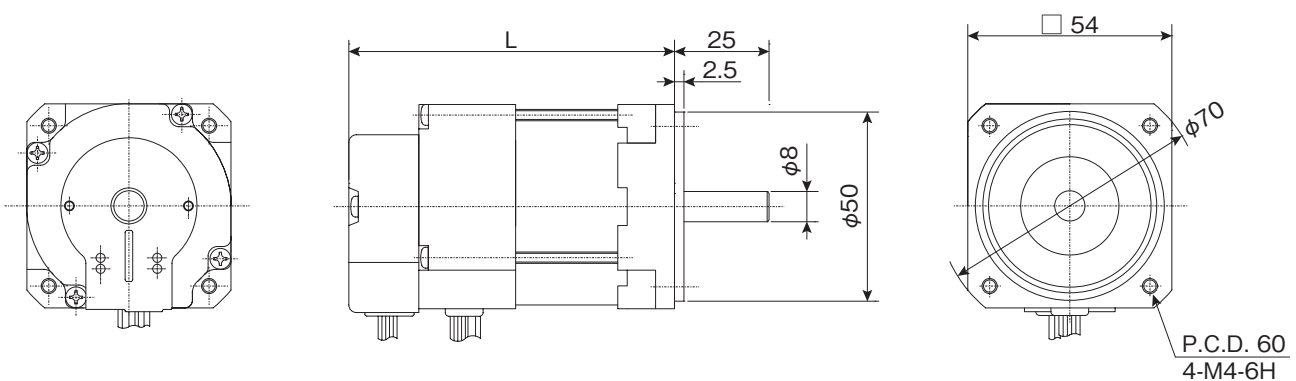
SPECIFICATIONS

MODEL NAME	RATED POWER	RATED VOLTAGE	RATED SPEED	RATED TORQUE	RATED CURRENT	TORQUE CONSTANT	BACK EMF CONSTANT	PHASE RESISTANCE	PHASE INDUCTANCE	INSTANTANEOUS PEAK TORQUE	MAX. SPEED	ROTOR INERTIA	POWER RATE	MECHANICAL TIME CONSTANT	ELECTRICAL TIME CONSTANT	MASS
	W	V-DC	r/min	N·m	A	N·m/A	V·s/rad	Ω	mH	N·m	r/min	g·cm ²	kW/s	ms	ms	kg
LA052-040E	40	24	3000	0.127	2.5	0.05	5.0×10^{-2}	1.18	4.4	0.382	5000	110	1.48	5.2	3.7	0.6
		75		0.127	0.9	0.148	14.8×10^{-2}	11.0	42	0.382	5000	110	1.48	5.5	3.8	0.6
LA052-080E	80	24	3000	0.255	4.6	0.059	5.9×10^{-2}	0.60	1.4	0.765	5000	117	5.56	2.0	2.3	0.6
		75		0.255	1.8	0.191	19.1×10^{-2}	6.2	14	0.765	5000	117	5.56	2.0	2.3	0.6
LA052-110E	110	75	3000	0.353	2.1	0.196	19.6×10^{-2}	3.71	9.1	1.059	5000	185	6.74	1.8	2.5	0.8

TYPE	OUTPUT CIRCUIT	RESOLUTION	NUMBER OF CHANNELS	POWER SUPPLY	CONSUMPTION CURRENT	OUTPUT VOLTAGE	PHASE OFFSET	FREQUENCY RESPONSE	OPERATING TEMP. RANGE
		P/R		V-DC	mA	V-DC		kHz	
HALL SENSOR	OPEN COLLECTOR	—	C1, C2, C3	5±5%	40 max.	14.4 min. (I sink=15mA max.)	—	—	0°C~60°C (TEMPERATURE INSIDE OF ENCODER)
ENCODER	TTL COMPATIBLE	200, 400	A, B	5±10%	50 max.	V _{OH} =2.4 min. V _{OL} =0.4 max. (I sink=3.2mA)	a, b, c, d = 90°±45°	20 min.	

*The values above are measured with aluminum mounting plate of 200×200×6mm

DIMENSIONS



Length: L

MOTOR TYPE	ENCODER MODEL
LA052-040E	86.1mm
LA052-080E	86.1mm
LA052-110E	106.1mm



Specifications are reference only. Feel free to contact sales office or sales agent for detailed information.

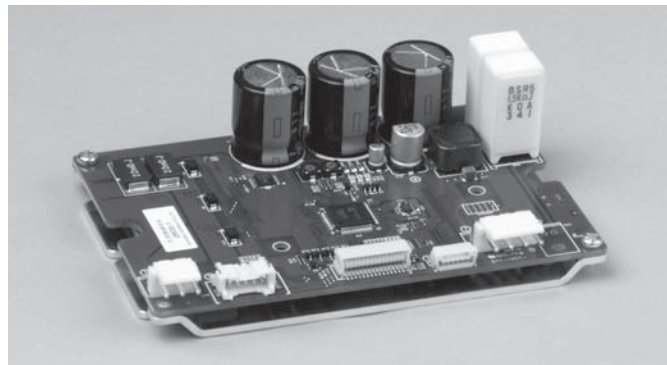
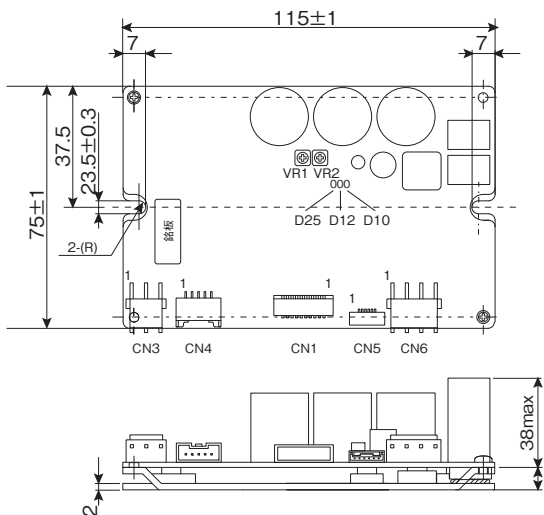
■ Driver: DDB38T711

MODEL NAME		STANDARD
		DDB38T711
Specification items		
Power	Output Power	100 W
	Input Voltage	DC 24 V
Control	Torque control	Internal setting (0 - 400%) / Analog input (Optional)
	Speed control	Internal setting (0 - 100%) / Analog input (Optional)
	Position control	Reference pulse input 1. 90deg. phase difference mode 2. 2 pulse input mode 3. 1 pulse input mode
Communication		RS-485
Parameter setting		Control mode, Pulse input mode, Electrical gear, Gain, Position completion, Speed error, Torque control lock, Acceleration time, Deceleration time, Speed, Position and others
Input	2 channels (Reference Pulse)	Pulse (CW/PLS) / (CCW/DIR)
	7 channels (Multi purpose)	The signal and logic are selectable <ul style="list-style-type: none"> • Servo On/ Off • Position clear • External error • Direction logic • Start / Stop • Control mode • Alarm reset • Preset memory • Initial drive • Others
	Analog 1 channel (0-5VDC)	The signal is selectable <ul style="list-style-type: none"> • Torque control • Speed control • Others
Output	2 channels (Encoder pulse)	Motor encoder pulse output (400ppr / 1000ppr)
	4 channels (Multi purpose)	The signal and logic are selectable <ul style="list-style-type: none"> • Servo On/ Off • Errors • Status • Ready/busy • Others
Function switch	Dip switch	8 bit
Indicator	LED	Power X1 Status X 2
Protective functions		Over voltage, Under voltage, Motor temperature, Hall sensor signal error, Encoder signal error, Over current, Speed error, Servo deviation, Initial drive error
Operating condition	Ambient temperature	0 - 50deg. C
	Ambient humidity	85% or less (No condensing and no freezing)

Specifications are reference only. Feel free to contact sale office or sales agent for detailed information.

DIMENSIONS

■ STANDARD (DDB38T711)



Stepping Motor

BLDC Motor

Motor Driver

Other Motor